

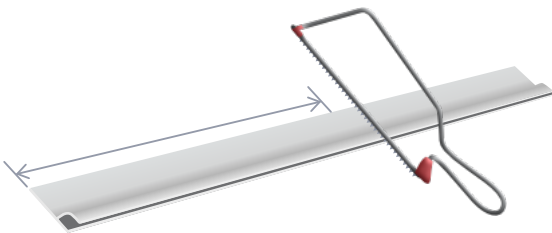
# Cutting and fitting instructions brush strip



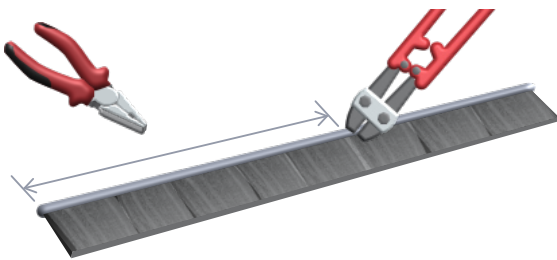
When cutting brush strip products, it is important that the ends are correctly sealed to avoid filament loss.

## TOOLS YOU MAY NEED

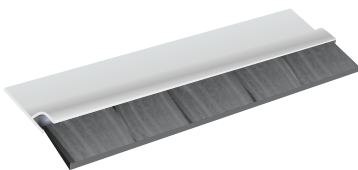
- Tape measure
- Pencil
- Scissors, pliers, shears, bolt cutters or wire cutters
- Fine tooth saw, hacksaw, power saw or similar
- Drill or screwdriver
- File



- 1) Measure the required length and cut the carrier with a fine-tooth saw (or similar).



- 2) Cut the brush strip to the required length with a pair of bolt cutters or similar. Close the end of the brush strip by crimping it. Pinch the end of the channel with pliers, bolt or wire cutters.



- 3) Slide the brush strip back into the carrier. Bend the brush strip approximately 300mm from the end to provide a grip and prevent any undesired movement. The end of the carrier can also be crimped to secure the brush.

**ALWAYS** slide the brush strip out of the carrier to cut. **DO NOT CUT** the brush and aluminium together as it will lose the filament.

**HELPFUL TIP:** If you encounter any difficulties sliding the brush back into the carrier, you may want to file off the end and/or use a small amount of light oil inside the channel.

All seals should be fitted so that the brush filaments are in firm contact with the mating surface.

Care should be taken not to over-flex the trim against the mating surface.

**HELPFUL TIP:** During transit, the bristles may become misshapen. Using a heat source, such as a hairdryer, can help restore them to their original shape.

## FIXINGS:

Due to the variety of fixings on the market and the variety of applications, we do not supply any fixings. You may wish to consider;

- Fixing to steel plate - machine screws
- Fixing to sheet metal - aluminium pop rivets
- Fixing to timber - countersunk or round-head screws
- Fixing to masonry - use suitable wall plugs with screws or fit to a timber batten
- Fixing to glass - use Self-adhesive tape

## BRUSH STRIPS & SEALING SYSTEMS

### Formseal Limited

Unit 5  
Douglas Park Opal Way  
Stone - ST15 0YJ  
United Kingdom

+ 44 (0)1785 284808  
sales@formseal.co.uk  
www.formseal.co.uk