

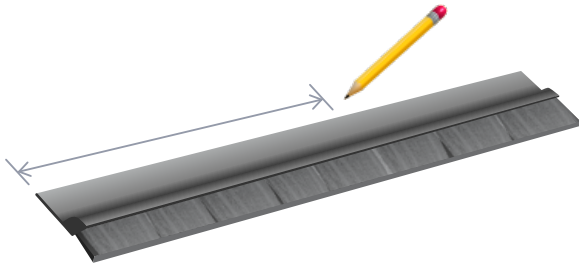
Cutting and fitting instructions **flexible brush strip**



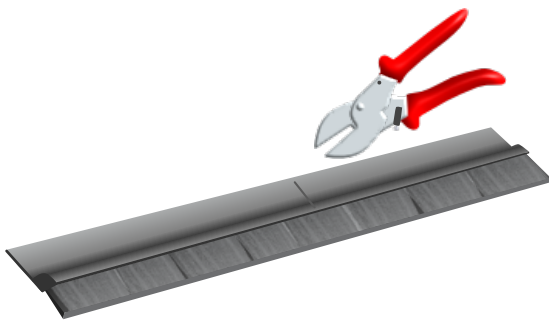
The assembly of the flexible brush strip is straightforward. The versatility of installation methods makes it a practical choice for many sealing needs.

TOOLS YOU MAY NEED

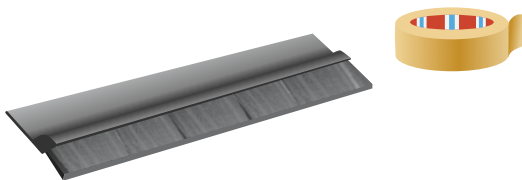
- Doubled-sided adhesive tap
- Pencil
- Screws
- Glue
- Scissors, pliers, wire cutters



1) Measure the overall width of the desired length. Cut the flexible brush strip using wire cutters, ensuring no wasted material. Due to a special opening in the box, it can be easily cut to the right size.



2) For fixing, you have several options including double-sided adhesive tape, screws, glue, or sliding it into an existing profile.



**BRUSH STRIPS &
SEALING SYSTEMS**

Formseal Limited
Unit 5
Douglas Park Opal Way
Stone - ST15 0YJ
United Kingdom

+ 44 (0)1785 284808
sales@formseal.co.uk
www.formseal.co.uk